

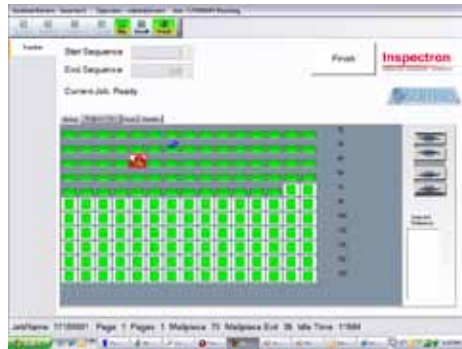
Inspectron

ENSURING DOCUMENT INTEGRITY

DocuTrak

DocuTrak is a complete stand alone, real-time piece level tracking, reconciliation and report solution for production devices. **DocuTrak** makes non-intelligent devices intelligent, and provides services normally only found in large, high-volume production environments.

DocuTrak allows you to monitor an individual production device, whether it be a printer, inserter or finishing device. Documents are tracked using a combination of leading software and hardware, such as barcode readers, CCD cameras and high-speed comparison logic. Together, these tools integrate to offer you an independent, non-obtrusive production control system.



The included Report Generator allows you to generate compliance reports, such as SAS 70, with ease. **DocuTrak** can operate on an individual machine, or it can be expanded to a full-blown Automated Document Factory, with a central system monitoring and controlling multiple machines.

With over 30 years of document integrity experience worldwide, **Inspectron** is ideally positioned to help with your unique integrity needs. For further information, contact one of our **Docutrak** specialists today!

Benefits include:

- Compatible with all makes and models of Inserters
- Real-time piece level tracking
- Closed loop Integrity
- Complete audit history
- Mailpiece reconciliation and reprint
- Optional Feeder Integrity
- Graphical Interface shows status of every piece
- Independent, non-obtrusive control system
- Report Generator provides compliance reports such as SAS 70
- Expandable for multiple machine tracking



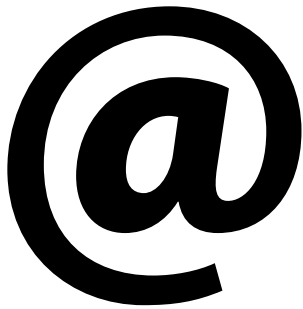
Inspectron

ENSURING DOCUMENT INTEGRITY

Contact a representative today for more information:



+1 (866) 617-4675 (US)
+44 (1373) 452555 (UK)



info@inspectron.com



www.inspectron.com

